

### 3. Fast Printing



**Crown**  
0.1mm Layer / 2.5 sec UV curing,  
170 Layer(17mm) takes 7 min

**Model**  
0.1mm Layer / 1.2 sec UV curing,  
170 Layer(17mm) takes 2 min

**Guide**  
0.1mm Layer / 2.0 sec UV curing,  
170 Layer(17mm) takes 15 min

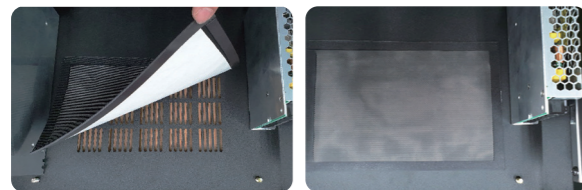
- Abundant amount of light secure the fast printing speed and high quality result
- Printing speed up to 0.1mm layer / 2.5 seconds

### 4. Convenient Post Treatment



- Easy post-processing channel plate
- Easy and clean separation of the model from the plate with a scraper
- Channel plate makes the model strong and solid

### 5. Built in Dust Filter



- Considering dusty environment of dental labs around the world, all vents have condition which dental lab has much dust, apply to dust filter on all air intake vents have dust cover.

### 6. High Resolution Printing

- X-Y axis resolution of 51 $\mu$ m

# CYBER1ED

**KOREA**  
Cybermed Inc.

**Headquarters**  
6-26, Yuseong-daero 1205beon-gil, Yuseong-gu, Korea (34104)  
Tel +82-42-716-3070 | Fax +82-42-716-3075

**Sales Office**  
254, Beotkkot-ro, Geumcheon-gu, Seoul, Korea (08511)  
Tel +82-2-6959-1553 | Fax +82-2-6959-1554

**USA**  
OnDemand3D Technology Inc.

1382 Valencia Ave. Unit K, Tustin, CA 92780, USA  
Tel +1-949-341-0623 | Fax +1-949-334-1317

Email [info@ondemand3d.com](mailto:info@ondemand3d.com)  
Web [www.cybermed.co.kr](http://www.cybermed.co.kr)

Copyright ©2021 Cybermed Inc. All rights reserved

# ONDEMAND3D PRINTER

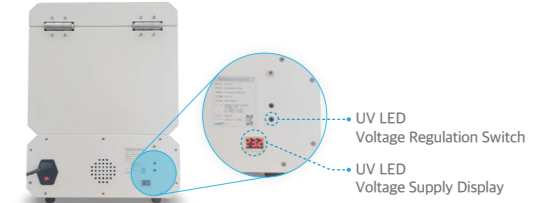
For Digital Dentistry  
by CYBERMED



ONDEMAND3D  
CYBER1ED

## OnDemand3D Printer Special Function

### 1. UV Light Power Stability



- It is possible to easily check voltage supply and accordingly install and calibrate voltage for UV LED.
- Optimized settings allow to get the best of the printer regardless of operation site.

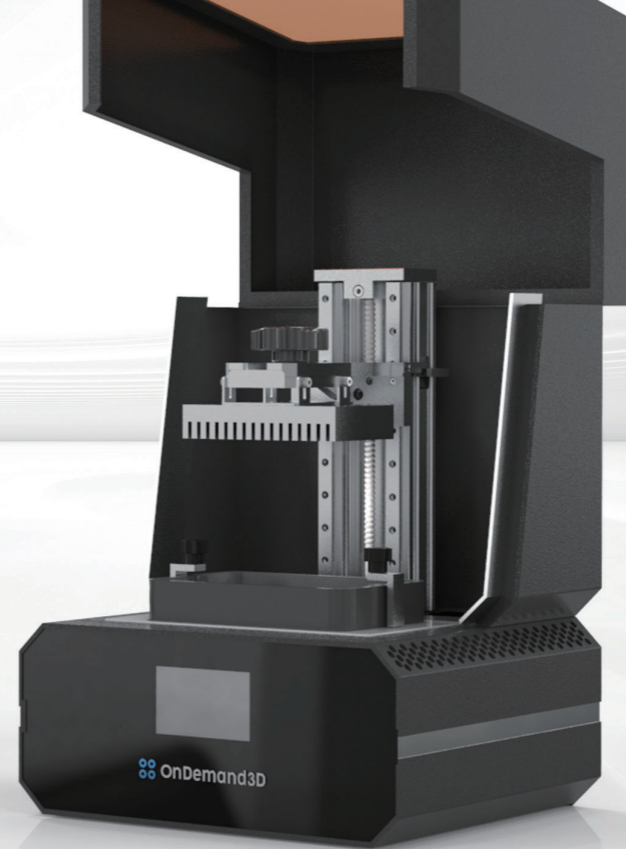
### 2. Temperature Stability



- Automatic temperature control system allows to maintain optimal temperature for printing
- Improved resin flow and printing success rate

# For Digital Dentistry, OnDemand3D Printer

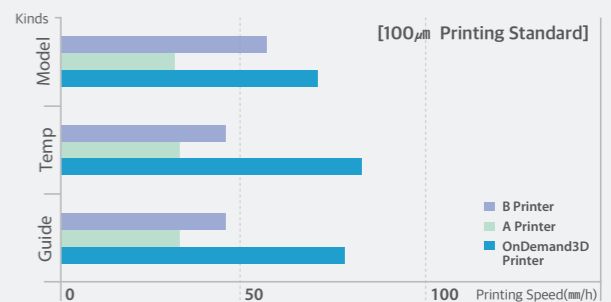
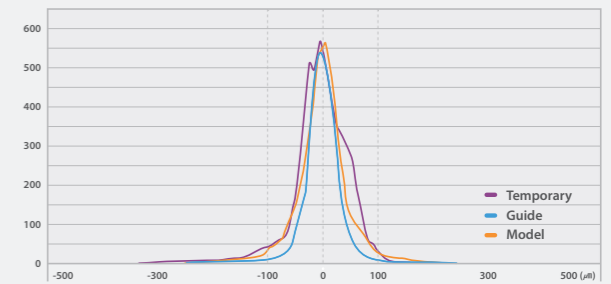
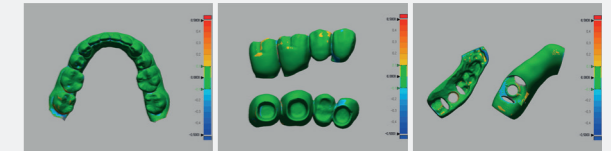
The very first OnDemand3D Printer by Cybermed Inc. is planned and developed specifically for dental purposes and is designed to be easy to use and accessible for Dental specialists around the world. We make Digital Dentistry available for all dentists with our 3D Printing Solution.



## ■ Main Specifications

Details	Specifications
Type	Monochrome LCD 6.1inch
X-Y Resolution	2560 × 1620 / 2K (XY 51μm)
Z Resolution	20μm ~ 200μm
Building Size	X 82mm Y 130mm Z 150mm
Light Source	405nm Arrayed LED / 80W
Build Plate Type	Leveling Free / Channel Plate
Machine Dimension	W 330mm D 300mm H 470mm
Heating	Auto Heating Chamber / Light sensor
Weight	17kg
Power	AC 110~220, 350W

## ■ Precision and Printing Speed



## ■ Cybermed's Digital History



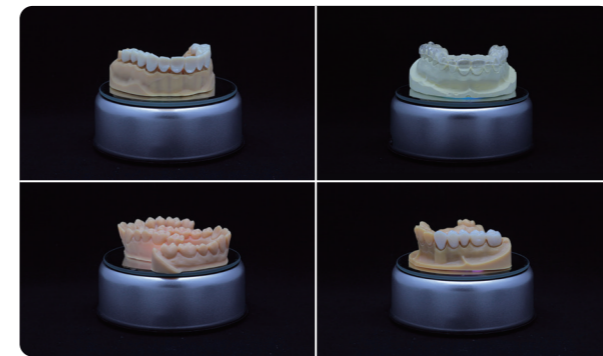
Cybermed Inc. is the first in South Korea to provide Dental 3D Printing Solution. We have more than 10 years of experience and technological exchange with Germany Envisiontec Company, US Stratasys Company and other prominent companies as a Global Dental Application Partner.

## ■ Cybermed's Service Quality



Our 3D Printing specialist were trained to provide the best support in the business, by Leading 3D Printing Companies i.e. Germany EOS and Italy DWS and got certified with National Technological Qualification.

## ■ OnDemand3D Printing Application



Implant Surgical Guide Stent, Temporary Crown, Model, Clear Aligner Molds, Directly printing Clear Aligner, Denture Base etc.